

16 Watering up-to Three times a day on selected days (P3)

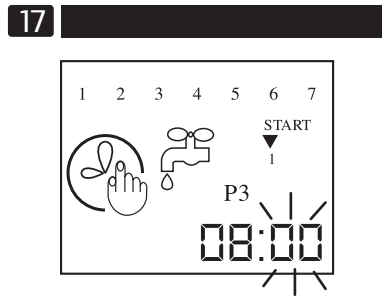
If you need to water more, up-to three times a day, on specific days, use the P3 program. Duration time must be programmed first. See section 11.

Setting the Start Times

To set start times, you must be in an operating mode (P1, P2 or P3).

- Press MODE until the clock setting screen appears, Press MODE again until the Duration Time (with tap) screen appears, press MODE a third time until the P1 screen appears, press again until P2 appears, then press again until the P3 screen appears (the minutes will be flashing).

On this screen, the clock numbers refer to the time you wish the first irrigation (START 1) to begin.



The three arrows under START indicate the three different irrigations. As each arrow appears you may program the start time for that particular irrigation.

- Use the ⊕ and the ⊖ buttons to adjust the minutes.
- Press SET to continue.
- Use the ⊕ and the ⊖ buttons to adjust the hours.
- Press SET to continue programming. The arrow now appears under START 2.

18 Setting up a Second and Third Daily Irrigation

Repeat the above steps for setting the start times of the second and third daily irrigations. After completing setting the start times, the number 1 in the upper left corner will flash indicating that you are now ready to choose the days you wish to irrigate.

Choosing the Days

- Press SET to move through the days, and reach the day you wish to irrigate. The number (corresponding to the day of the week) will flash.
- Press ⊕ to select that day (the square which appears indicates day is selected).
- Press ⊖ to deselect day.
- Continue through all the days until day 7 is flashing, then either press SET to return to operating mode or press ⊕ to select 7 (if desired) and then press SET.

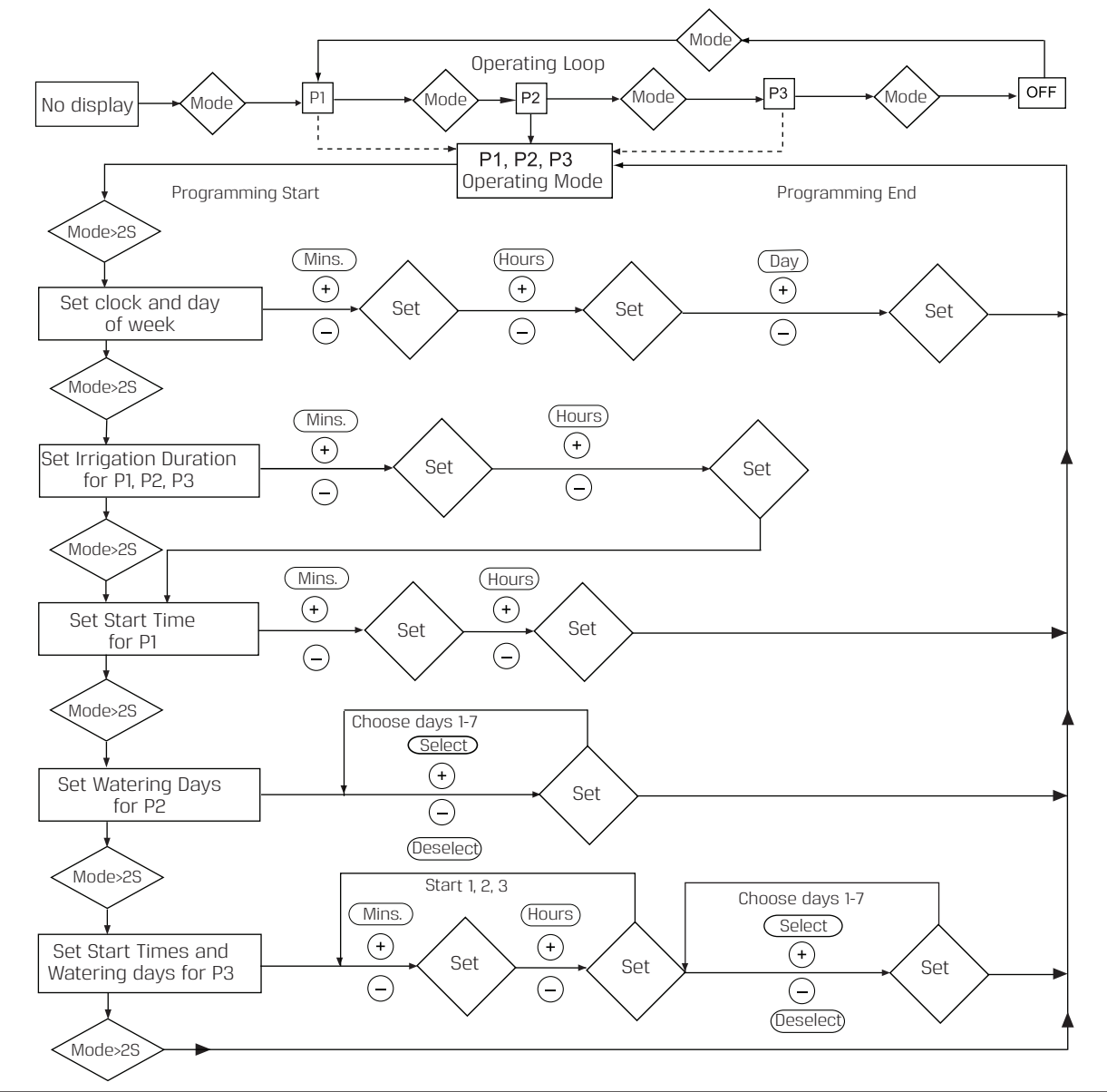
19 Example

If you wish to irrigate on Sunday, Tuesday, Thursday and Friday at 8:00 in the morning, and at 15:00 in the afternoon for 30 minutes each time, first make sure the clock is set and duration time is set to 0:30. Then press MODE until the clock setting screen appears, press MODE again until the Duration Time (with tap) screen appears, press MODE a third time until the P1 screen appears. Press again until P2 appears, then press again until the P3 screen appears (with clock and tap). Set 1 to 8:00, Start 2 to 12:00 and Start 3 to 15:00. After setting the irrigation start times, the days at the top of the screen will flash. Set 1, 3, 5 and 6 then press SET when you reach day 7.

Off season

During the season when you do not need to water your plants, press the MODE button quickly until OFF is displayed. DO NOT remove the battery. The controller is equipped with a back-up battery, and removing the main battery for long periods will cause the back-up battery to discharge.

Flow Chart for G75 Irrigation Controller

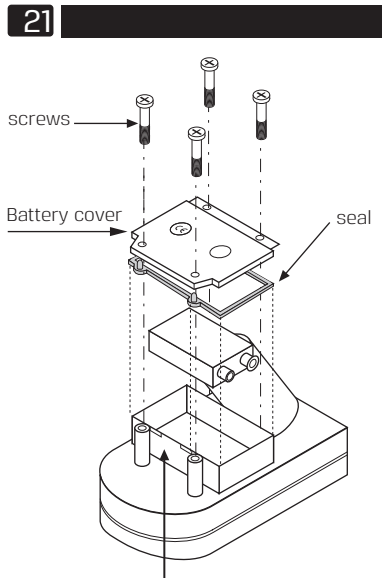


20 Maintenance

Battery Installation

Replace the battery at the start of each irrigation season and when the low battery symbol appears.

- Using a Phillips screw driver, remove the four battery cover screws.
- Remove the battery cover and seal.
- Replace the battery.
- After reattaching the seal, put the cover back, and secure with the four screws.



When replacing the seal, push seal tabs into slots.

22 Troubleshooting

Problem	Cause	Solution
Controller does not irrigate plants as desired.	Water at main faucet is shut off	Check faucet
	Hose cut or blocked	Replace damaged section
	Battery dead	Replace battery
	Controller set on OFF	Set controller to desired program
Blank display	Controller improperly programmed	Check program and clock settings
	Battery dead	Replace battery
Water does not turn off	Controller is sleep mode	Press MODE to activate screen
	Valve blocked by dirt or scale	Replace valve
	Valve installed backwards	Install valve so that the arrow points in the direction of the water flow.

Caution! Do not remove the battery when the controller is in use

23 Guarantee

Baccara products are guaranteed to be free from defects in material and workmanship for a period of one year from the date of delivery.

This guarantee does not apply where equipment is not used and installed strictly in accordance with Baccara specifications and Users Guide. Neither does it apply to failures caused by lightning strikes or damage due to freezing temperatures or mechanical causes (e.g. lawn mowers). Baccara is not liable for indirect, incidental or consequential damage in connection with the use of equipment.

To receive guarantee benefits, customers should return defective units along with the receipt to the nearest Baccara distributor.

Baccara reserves the right to alter, modify or redesign its products, pricing and guarantee at all times without creating any liability for the obsolescence of customer inventory of such parts or products.

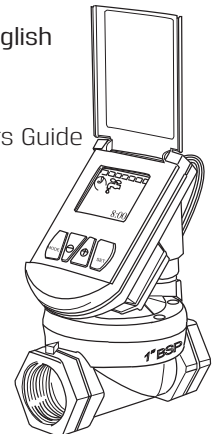
This manufacturer guarantee policy may apply differently in different countries.

BACCARA

G75 Irrigation Controller

- English

Users Guide



Baccara Geva Ltd, Kvutzat Geva 1891500, Israel
Tel. 972-4-6535-960 • Fax. 972-4-6531-445
E-Mail: info@baccara-geva.com www.baccara-geva.com

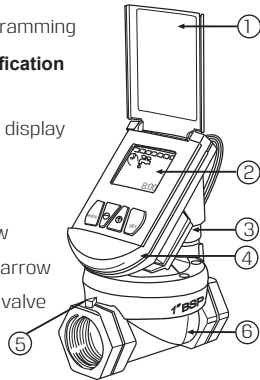
1 Getting Started

Features

- Up to three operations per day
- Battery powered; no need for electrical hookup.
- Easy Installation
- Waterproof and weather resistant

Parts Identification

1. Top cover
2. Controller display
3. Solenoid
4. Controller
5. Water flow direction arrow
6. Hydraulic valve



2 Basic Controller Functions

This section gives a brief description of the Controller buttons. See the following sections for further details.

MODE button - Quick presses of the **MODE** button turn the controller off, or turns on a specific program (**P1**, **P2** or **P3**).

Longer presses of the **MODE** button put the controller in programming mode. **SET** button - Press the **SET** button to set a function and proceed.

⊕ ⊖ Use these buttons to increase and decrease schedule functions.

3 Installation

1. Turn off the main faucet.
2. Install the valve in the irrigation system so that the arrow on the valve is pointing in the direction of the water flow. The controller may be swiveled around to facilitate installation.
3. Occasionally the valve opens in transit. To ensure that the valve is closed before you open the mainfaucet, first make sure that the controller is not set to OFF (If it is set to OFF, press briefly on the **MODE** button to turn it on). Then press ⊕ and **SET** simultaneously to open, and press ⊖ and **SET** simultaneously to close. You are now ready to program the controller.
4. Turn on the main faucet.

4 Manual Operation

To manually open the valve, make sure the controller is not set to OFF (If it is set to OFF, press briefly on the **MODE** button), then press ⊕ and **SET** simultaneously.

The irrigation will continue until the interval defined has passed. If the irrigation duration has been set to zero, the valve will close after one minute.

To stop irrigating, press ⊖ and **SET** simultaneously

5 Making an Irrigation Schedule

If you are planning to water either on selected days only (**P2**), or up to three times a day on selected days (**P3**) it is important to make a watering plan before programming the controller. The plan should list the days you want to water, the number of times you wish to water each day, and what time you want the watering to start.

Consult this plan while programming the controller.

6 Irrigation Duration for P1 / P2 / P3

Duration Time	
---------------	--

P1 Irrigation Schedule Design Table

Start Time						
Sun.	Mon.	Tue.	Wed.	Thu.	Fri	Sat.
✓	✓	✓	✓	✓	✓	✓

P2 Irrigation Schedule Design Table

Start Time	As set in P1					
Sun.	Mon.	Tue.	Wed.	Thu.	Fri	Sat.

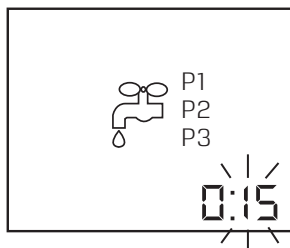
P3 Irrigation Schedule Design Table

	Start1	Start 2	Start 3
Start Time			
Sun.	Mon.	Tue.	Wed.

11 Setting the Irrigation Duration

To set duration of all irrigations, you must be in an operating mode (**P1**, **P2** or **P3**).

1. Press the **MODE** button until the clock setting screen appears, then press **MODE** again until the following screen appears (the minutes will be flashing).



On this screen, the clock numbers refer to the amount of time you wish irrigation to continue.

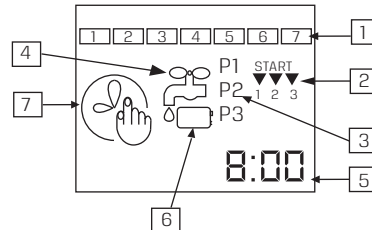
7 Programming the Controller

Meaning of Controller icons

NOTE:

Quick presses of the **MODE** button turns the controller off, or turns on a specific program (**P1**, **P2** or **P3**).

Longer presses of the **MODE** button put the controller in programming mode.



1. Irrigating days of the week
2. Program starts
3. Program#
4. Irrigation
5. Timing or clock
6. Low battery
7. Time adjustment

8

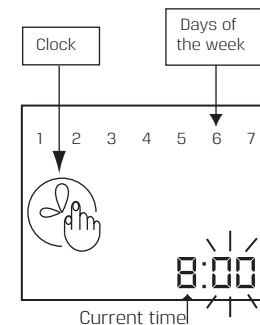
NOTE:

You cannot program the controller if it is set to manual operation (section 4) or if it is set to "OFF". To release from manual operation press ⊖ and **SET** simultaneously. To release from OFF press briefly on the **MODE** button. Controller will revert to operating mode after 30 seconds if no buttons are pressed.

9 Setting the Clock

If screen is blank, press **MODE** to activate.

1. Press **MODE** for several seconds until the time adjustment icon appears (The minutes will be flashing).



On this screen the numbers represent the current time.

10

2. Use the ⊕ and the ⊖ buttons to adjust the minutes.
3. Press **SET** to continue.
4. Use the ⊕ and the ⊖ buttons to adjust the hours.
5. Press **SET** to continue.
6. Use the ⊕ and the ⊖ buttons to select the current day of the week. The selected day will flash.
7. Press **SET** to return to operating mode.

12

2. Use the ⊕ and the ⊖ buttons to adjust the minutes.
3. Press **SET** to continue.
4. Use the ⊕ and the ⊖ buttons to adjust the hours.
5. Press **SET** to continue.

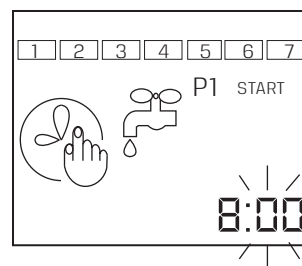
Watering every day at Set Time (P1)

If you would like to water your garden every day at a constant same time use the **P1** program:

Setting the Start Time

After setting the irrigation duration time, the following screen appears:

13



On this screen, the clock numbers refer to the time you wish irrigation to begin.

1. Use the ⊕ and the ⊖ buttons to adjust the minutes.
2. Press **SET** to continue.
3. Use the ⊕ and the ⊖ buttons to adjust the hours.
4. Press **SET** to return to operating mode (**P1** programming is now complete).

14 Watering on

Selected days (P2)

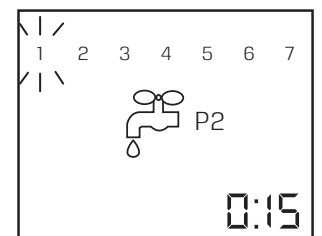
If you would like to water your garden on specific days at the same time use the **P2** program:

NOTE: Irrigation duration must be set first. See section 9. **P2** takes the start time directly from **P1**. For instructions on how to set **P1** see section 11.

Setting the Days

1. To set the days, press **MODE** until the clock setting screen appears, then press **MODE** again until the Duration Time (with tap) appears, then press **MODE** again until the **P1** screen appears, and press once again until the following screen appears:

15



2. Press **SET** to reach the day you wish to irrigate. The number (corresponding to the day of the week) will flash.
3. Press ⊕ to select that day (the square which appears indicate day is selected).
4. Press ⊖ to deselect a day.
5. Press **SET** until all days are programmed as desired. Current day continues flashing.
6. Press **SET** to return to operating mode.